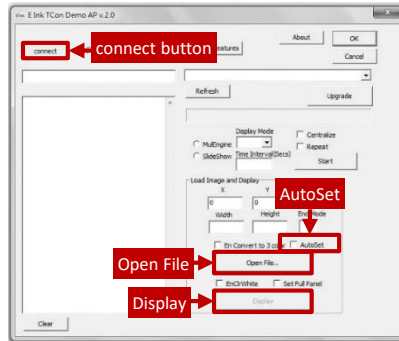
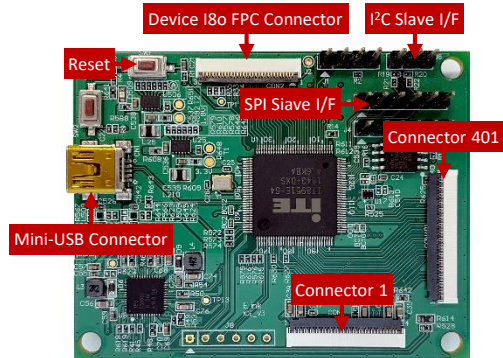


E Ink Quick Start Guide for Ice 6"

Panel and ICE jig connection SOP

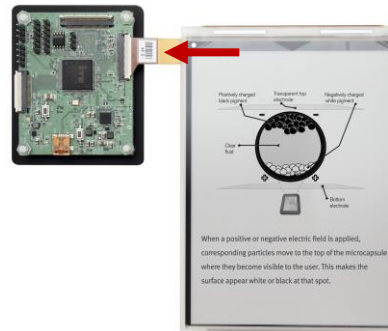
Demo Kit Hardware Description



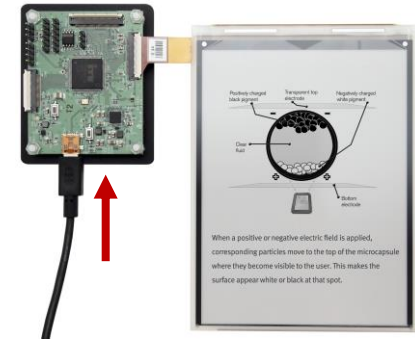
Button/Option	Function
Connect	Check USB connection
Open File	Load image and display panel
AutoSet	Auto set the parameters
Display	Image review

Assembly and Operating Instructions

① Attach the 6" panel to Ice Connector 1



② Connect the mini-USB cable to Ice



③ Connect the mini-USB cable to PC/NB



④ click **connect** button

⑤ click **AutoSet** option AutoSet

⑥ click **Open File** to select image

⑦ Image window shows up, click **OK** button

⑧ Click **Display** to show image

Disassembly Instructions

① Disconnect the mini-USB from PC/NB

② Disconnect the mini-USB cable from ICE

③ Detach the 10" panel from ICE